

Centric PLM Login Instructions - for Vendor / Suppliers of VS&Co

VS&Co Vendors and Suppliers,

To follow are the login instructions for Centric PLM.

There are 2 steps to enabling access to Centric PLM for VS&Co which must be done in this order:

STEP 1: Password Set Up and Ping ID



Procedure_New
Hire Setup_Authenti

STEP 2:

Do *not* proceed until you have completed STEP 1: Password and PingID set up. You will not be able to access the system until you have completed.

- Click: [Link to the Centric PLM site](#)
- Select the **BLUE SSO LOGIN** on the upper right as shown:



- Enter your:
 - **Network ID**
 - If you do not have, go back to **step B**
 - First name / last name combo
 - *Do not enter VND+11*
 - **Password** – from **step 1**
 - Select **“Go”**

<https://vs-preprod.centricssoftware.com>

VICTORIA'S SECRET & CO.

THIS IS THE PRODUCTION ENVIRONMENT

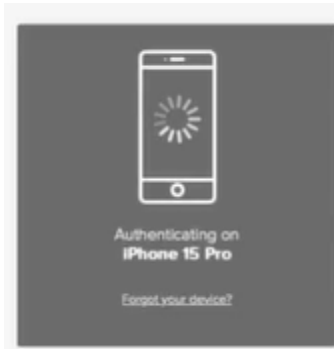
PLEASE USE YOUR VS&CO NETWORK ID AND PASSWORD TO LOGIN

User Name:

Password:

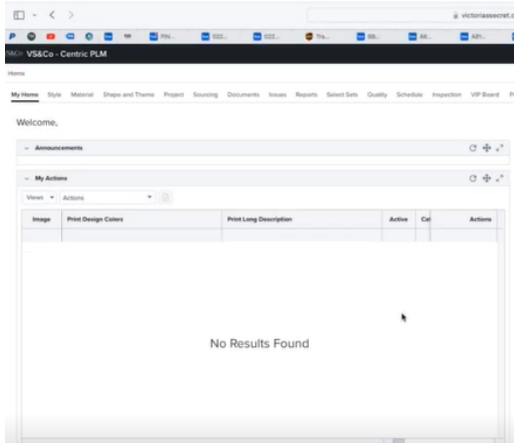
GO By clicking Go, I accept and agree to the **Acceptable Use Policy** and understand that my activity and communication when using the site may be monitored.

- Your computer will use **PingID** to authenticate and send a notification to you



- Navigate to your **SMS, email or phone** to locate the PingID **authentication code** and key in where directed.

- Once **PingID** has authenticated, it will **automatically** log you into Centric PLM which will look like the below:



- If you use an **Android** mobile device, are located in **China**, and are experiencing problems setting up PingID MFA, follow the steps outlined in “**Procedure China Vendors Yubikey Device**” document here:



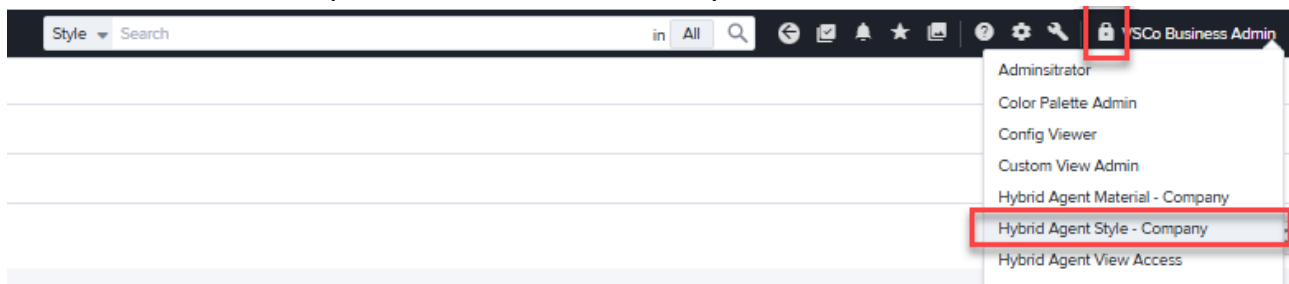
2. Procedure_China Vendors_YubiKey De

If you are still experiencing issues, call ITSD. Contact info listed at end.

STEP 4:

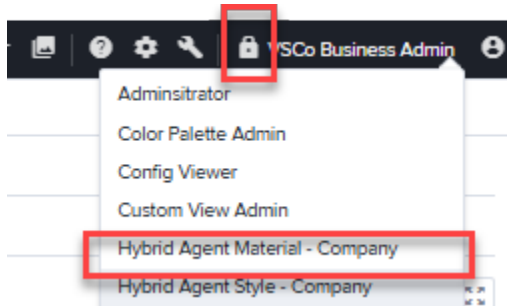
If you are a **FG Vendor**:

- Click the “**Lock**” icon and select “**Hybrid Agent STYLE – Company**”
- System may ask you to Confirm the change, select “Yes”**
 - This will provide access to *both* Styles and Material



If you are a Material / Component Supplier:

- Click the “**Lock**” icon and select “**Hybrid Agent MATERIAL – Company**”
 - You will NOT have any other choices
 - This will provide access to all your material / components



If you have done the above and are experiencing an issue, call ITSD:

US Internal: 7.7911

US Local: 614.577.7911 / Toll Free: 1.888.577.7911

India Local: 080-66747111 / Toll Free: 18001031675

China Toll Free: 400 120 5372

Sri Lanka: 011 4393 810

Vietnam: 028 3915 9010

Hong Kong Local: 22396444 / Toll Free: +852 800938899

Indonesia Toll Free: 00180300811088

International (UK/Other): +1.888.577.7911